

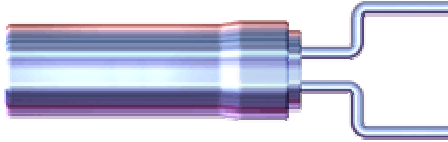
TUNING FORK CRYSTAL UNIT (SMD-Cylinder Type)

ANPIN

RoHS Compliant

26SAT

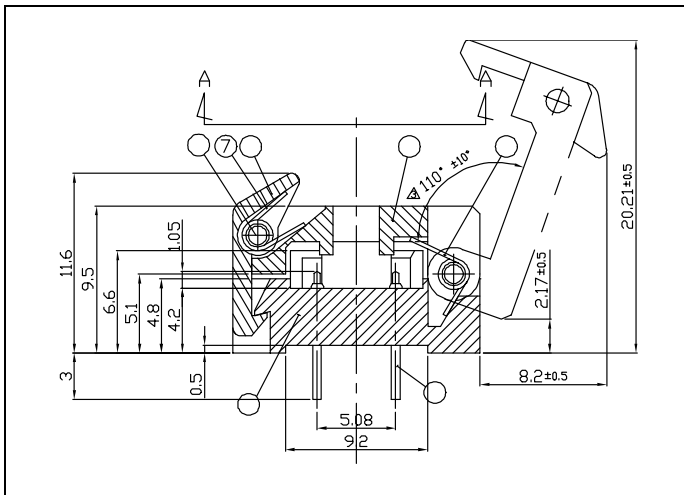
3000 pcs/reel



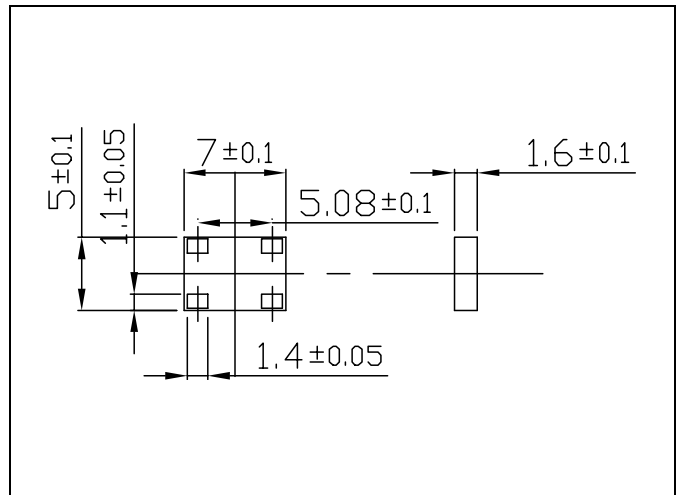
■ FEATURES

- High-density mounting SMD
- Automatic mounting and reflowable type

■ DIMENSIONS (mm)



■ SOLDER PAD LAYOUT (mm)



■ STANDARD SPECIFICATIONS

Item	Model	CMJ206T	Conditions
Nominal Frequency			
Frequency Tolerance			
Load Capacitance			
Operating Temperature Range			
Storage Temperature Range			
Motional (series) Resistance			
Level of Drive			
Aging (first year)			
Shunt Capacitance			